

IDEAL Version: ID13_0C_08

IDF

Format: Netherby-1 LWD RT 500MD

Vertical Scale: 1:500

Graphics File Created: 30-Jul-2008 23:26

PIP SUMMARY

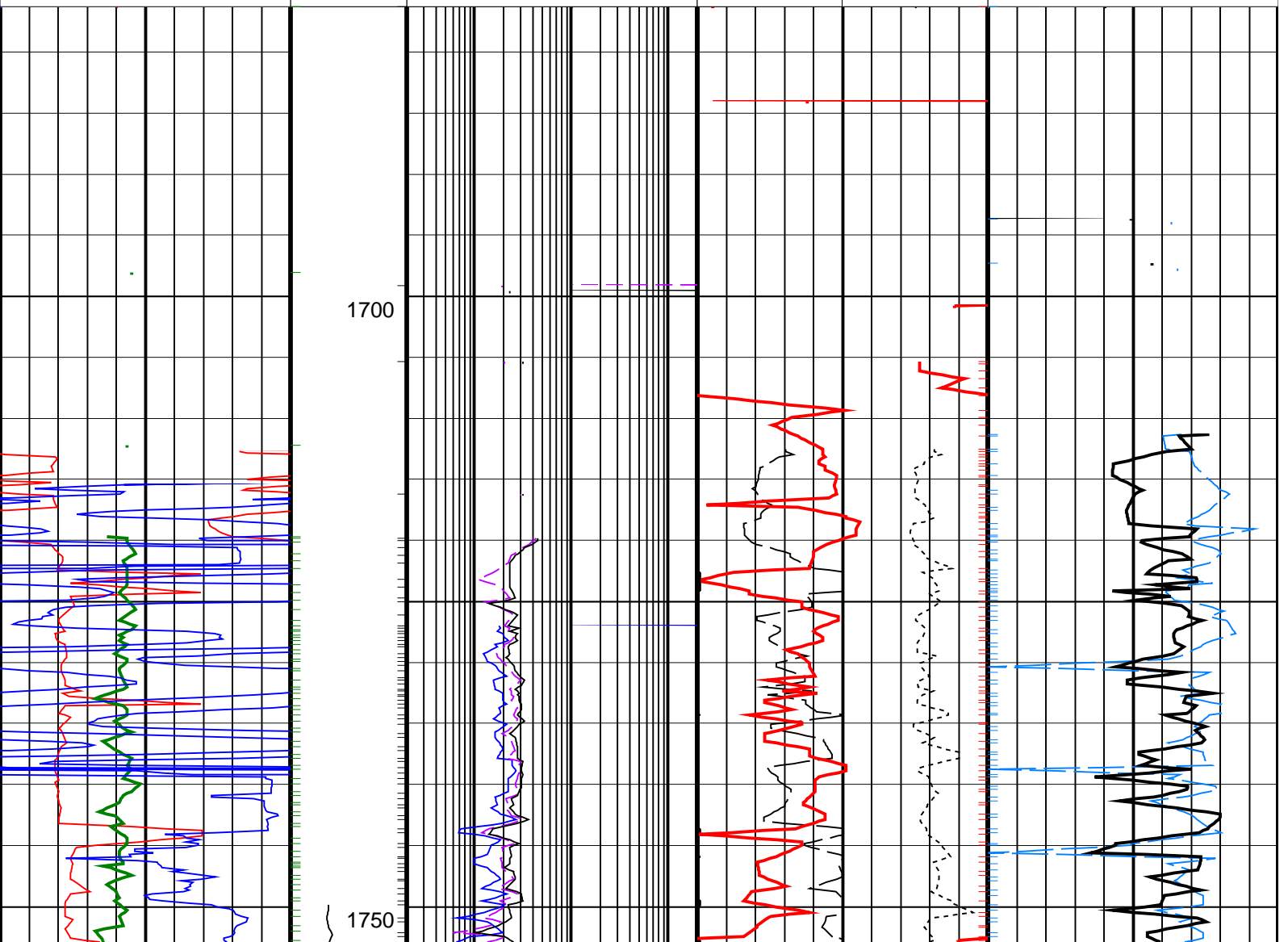
Gamma Ray Samples

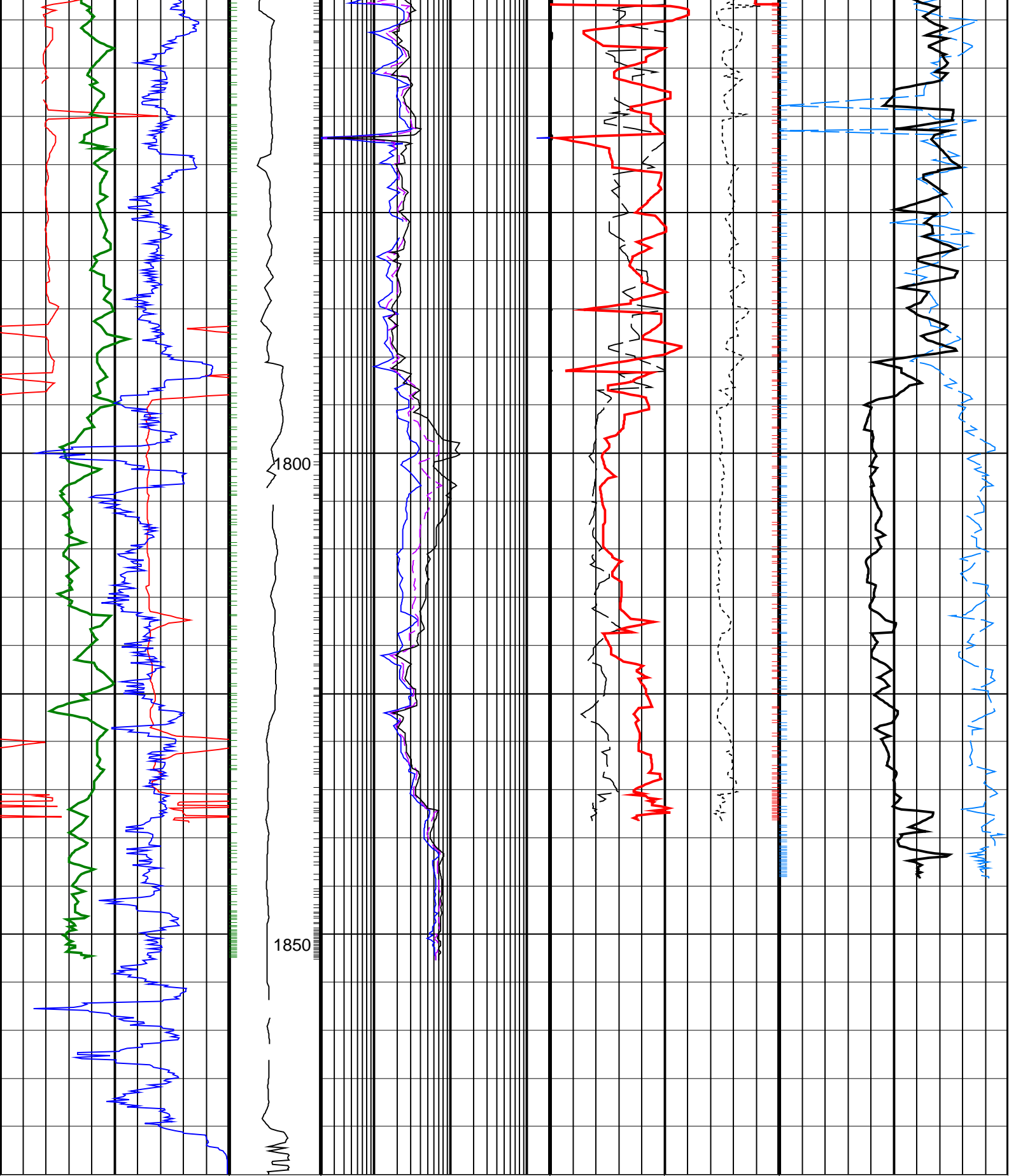
Delta-T Compressional, Real-Time

ARC Resistivity Samples

ROBB_A PIP

<p>ARC Gamma Ray, Real-Time (ARC_GR_RT)</p> <p>0 (GAPI) 200</p>	<p>ARC BHCorr Phase-Shift Resistivity 40-in. at 2 MHz, Real-Time (P40H_RT)</p> <p>0.2 (OHMM) 200</p>	<p>Bulk Density, Bottom, Real-Time Computed Downhole (ROBB_DH_RT)</p> <p>1.95 (G/C3) 2.95</p>		<p>Delta-T Compressional, Real-Time (DTCO_RT)</p> <p>140 (US/F) 40</p>
<p>Average Borehole Diameter, Real-Time (ADIA_ADN_RT)</p> <p>6 (IN) 16</p>	<p>ARC BHCorr Phase-Shift Resistivity 28-in. at 2 MHz, Real-Time (P28H_RT)</p> <p>0.2 (OHMM) 200</p>	<p>Bulk Density Correction, Bottom, Real-Time Computed Downhole (DRHB_DH_RT) (G/C3)</p> <p>-0.25 0.25</p>		<p>Coherence at Compressional Peak, Real-Time (CHCO_RT)</p> <p>0 (----) 1</p>
<p>ROP*5 (ROP5) (M/HR)</p> <p>200 0</p>	<p>MWD Collar RPM (CRPM_RT) (RPM)</p> <p>0 200</p>	<p>ARC BHCorr Phase-Shift Resistivity 16-in. at 2 MHz, Real-Time (P16H_RT)</p> <p>0.2 (OHMM) 200</p>	<p>Photoelectric Ratio, Bottom, Real-Time (PERB_RT)</p> <p>0 (----) 10</p>	<p>Coherence at Compressional Peak, Real-Time (CHCO_RT)</p> <p>0 (----) 1</p>





<p>ROP*5 (ROP5) (M/HR)</p> <p>200 0</p>	<p>MWD Collar RPM (CRPM_RT) (RPM)</p> <p>0 200</p>	<p>ARC BHCorr Phase-Shift Resistivity 16-in. at 2 MHz, Real-Time (P16H_RT)</p> <p>0.2 (OHMM) 200</p>	<p>Photoelectric Ratio, Bottom, Real-Time (PERB_RT)</p> <p>0 (----) 10</p>	<p>Bulk Density Correction, Bottom, Real-Time Computed Downhole (DRHB_DH_ RT) (G/C3)</p>	<p>Coherence at Compressional Peak, Real-Time (CHCO_RT)</p> <p>0 (----) 1</p>
---	--	--	--	--	---

				-0.25	0.25	
Average Borehole Diameter, Real-Time (ADIA_ADN_RT)		ARC BHCorr Phase-Shift Resistivity 28-in. at 2 MHz, Real-Time (P28H_RT)		Bulk Density, Bottom, Real-Time Computed Downhole (ROBB_DH_RT)		Delta-T Compressional, Real-Time (DTCO_RT)
6 (IN) 16		0.2 (OHMM) 200		1.95 (G/C3) 2.95		140 (US/F) 40
ARC Gamma Ray, Real-Time (ARC_GR_RT)		ARC BHCorr Phase-Shift Resistivity 40-in. at 2 MHz, Real-Time (P40H_RT)				
0 (GAPI) 200		0.2 (OHMM) 200				

PIP SUMMARY

└ Gamma Ray Samples

Delta-T Compressional, Real-Time└

└ ARC Resistivity Samples

ROBB_A PIP └

IDEAL Version: ID13_0C_08

IDF